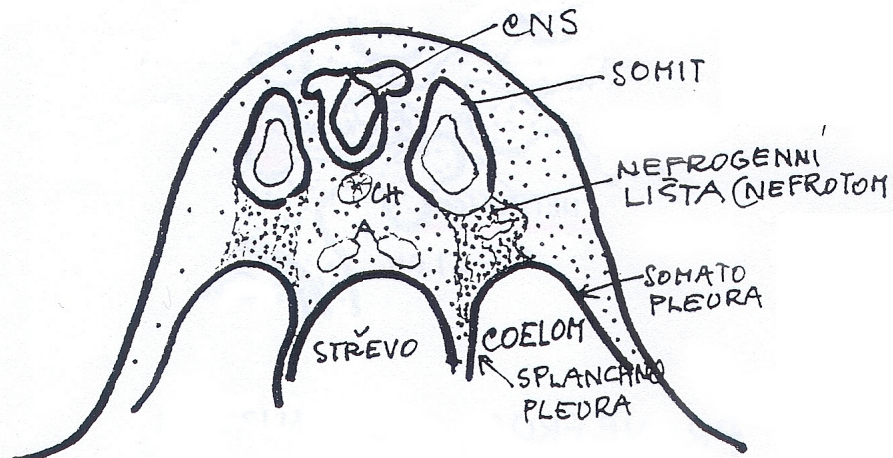
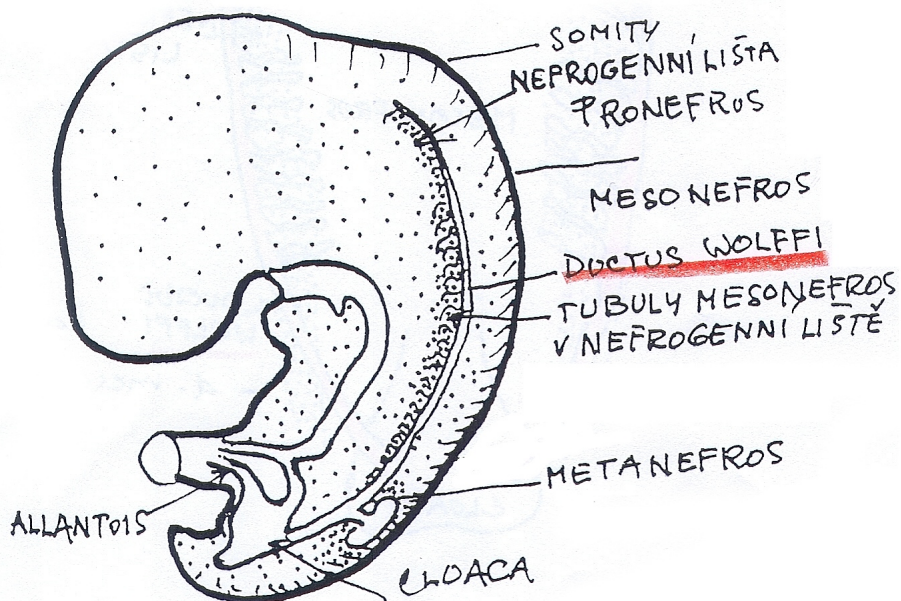


# Časný vývoj ledviny

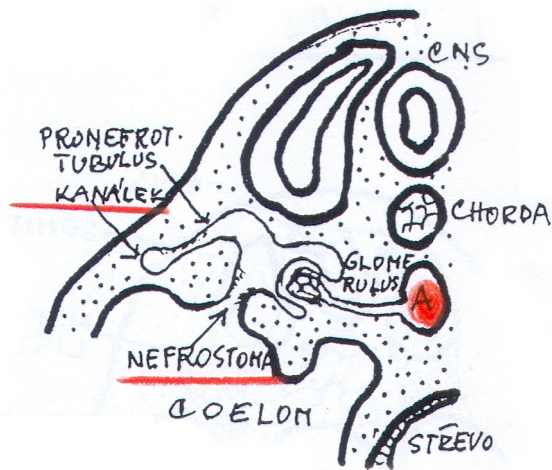


Nefrogenní lišta jako spojka mezi  
segm. a nesegmentovaným mesodermem

## Segmentace nefrogenní lišty Ductus Wolffii - kloaka

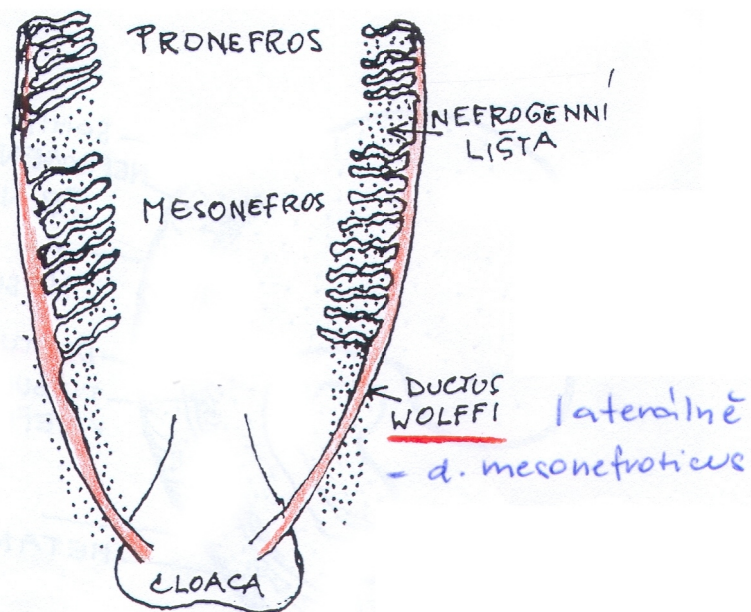


ductus mesonephriticus = d. Wolffii  
(mužské vývodné pohl. cesty)

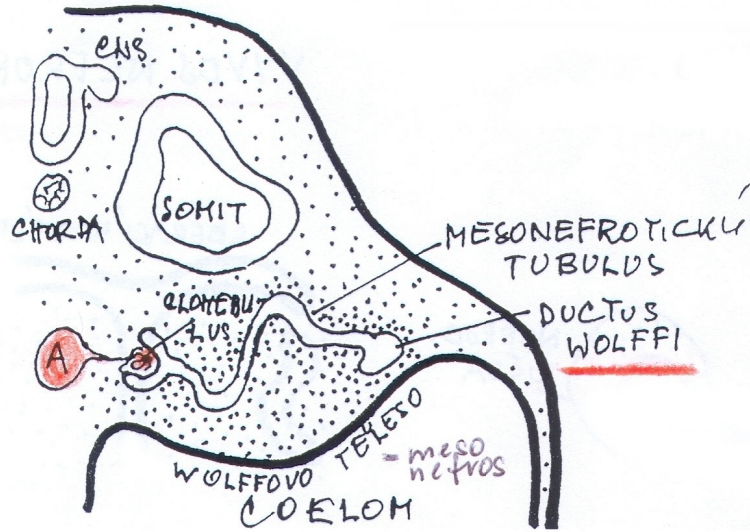


Pronefros zvl. u nižších  
obratlovců

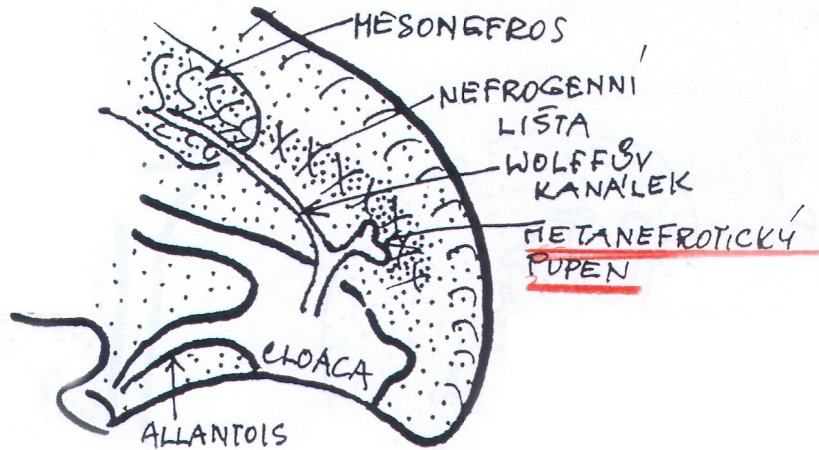
Pronefros a mesonefros -  
- společný vývod do kloaky



# Mesonefros

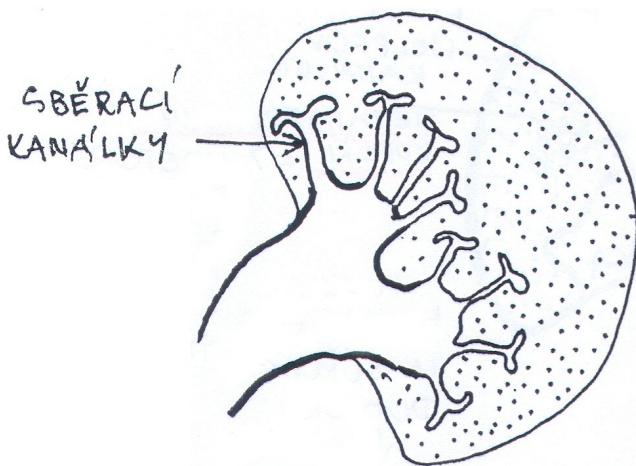
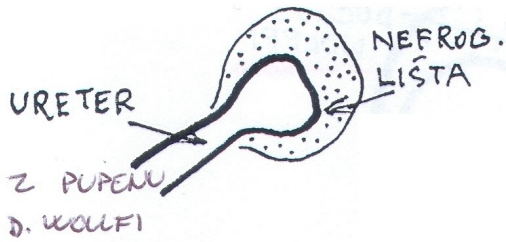


# Počátek vývoje metanefros

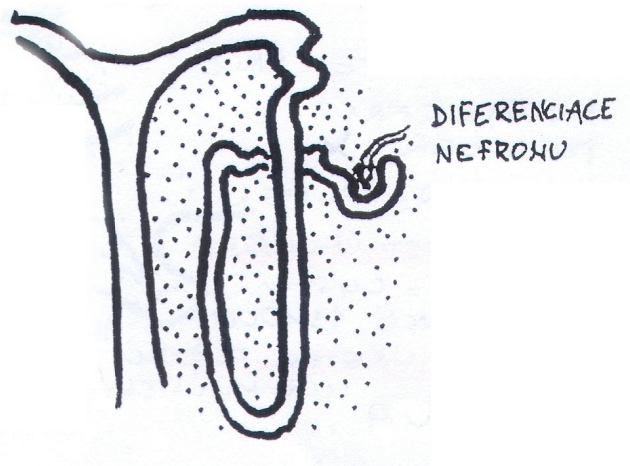
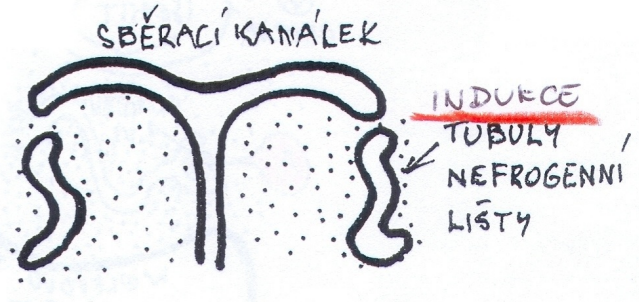


# Metanefros

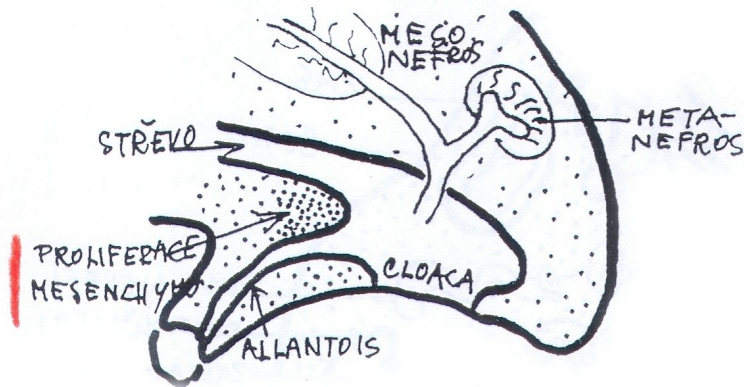
## Vývoj odvodných cest



## Vývoj nefronu



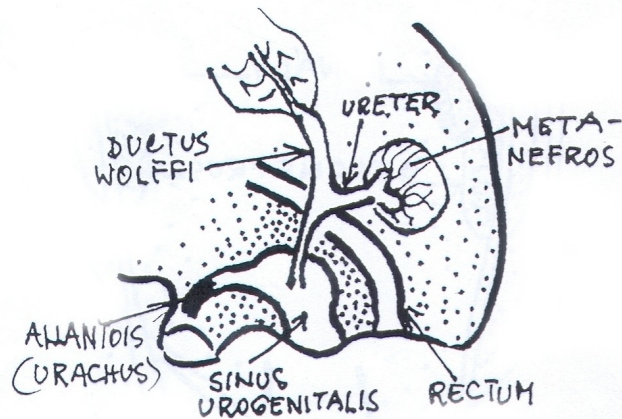
# Osudy kloaky



## Tvorba kloakálního septa



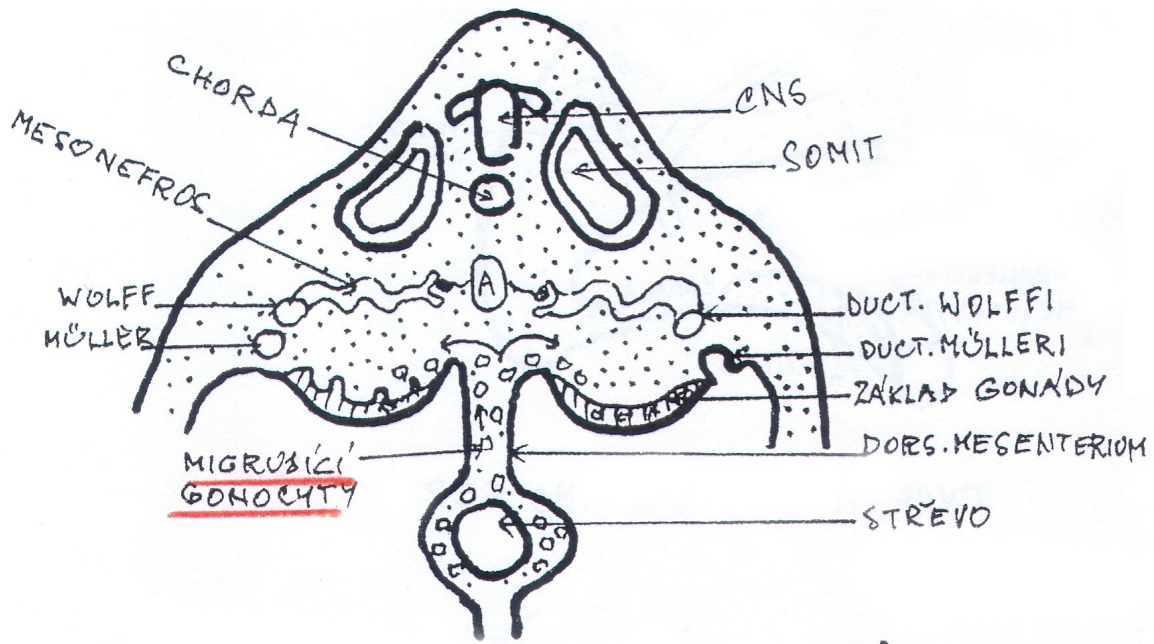
## Sinus urogenitalis - rectum



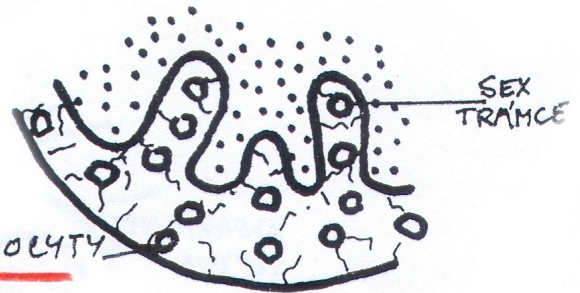
WW:

- Exstrofie měchýře
- Defekt stěny břišní
- Exstrofie kloaky
- Defekt páteře
- Anus imperforatus

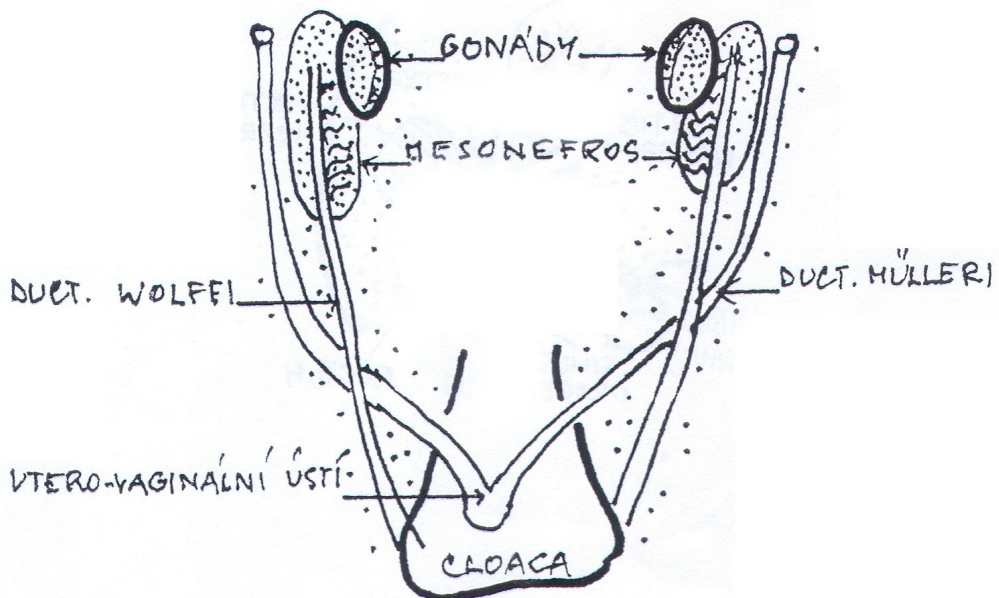
# Indiferentní stádium genitálu



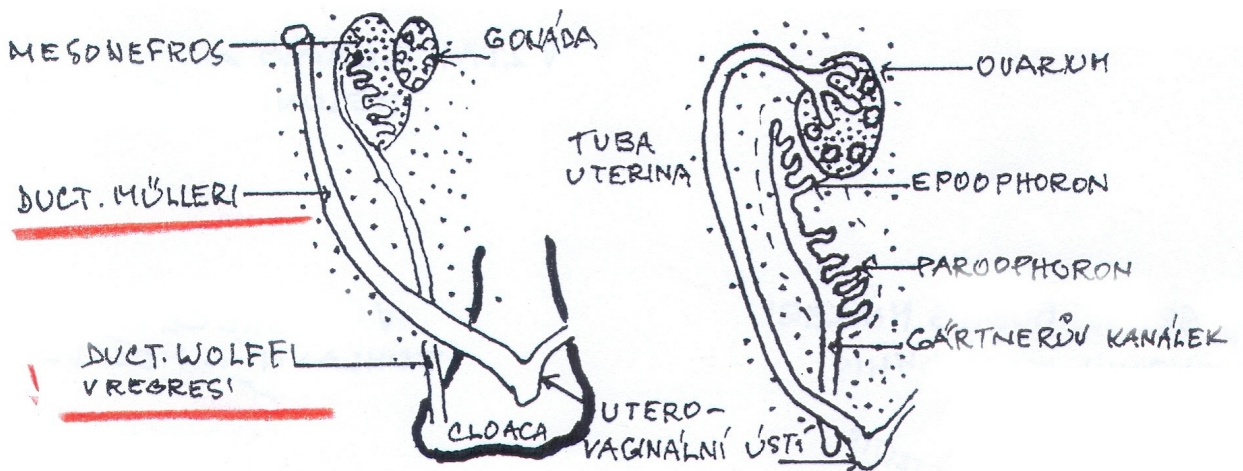
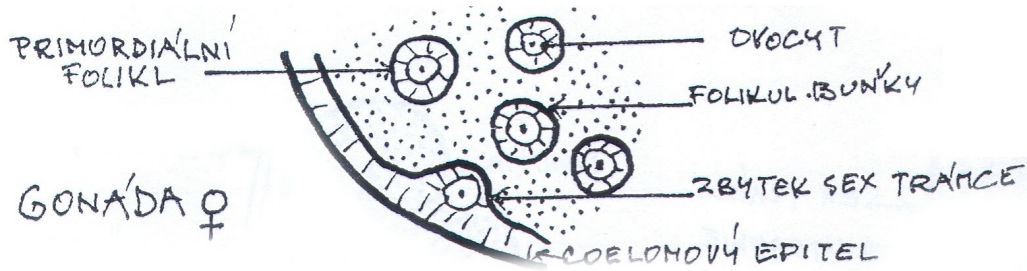
COELOMOVÝ EPITEL  
JAKO ZÁKLAD GONÁDY



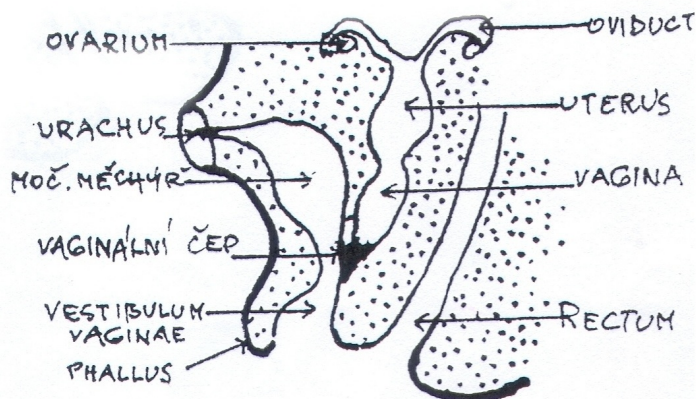
## Vztah gonády k mesonefros - vývodné cesty



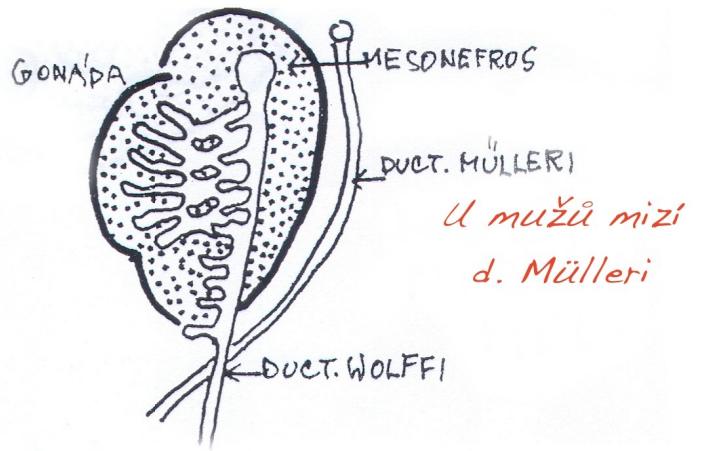
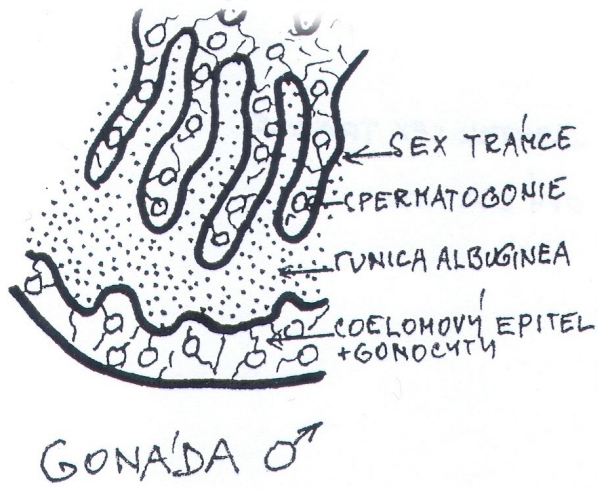
# Vývoj ženského genitálu



Situace po rozdělení kloaky na sinus urogenitalis a rectum



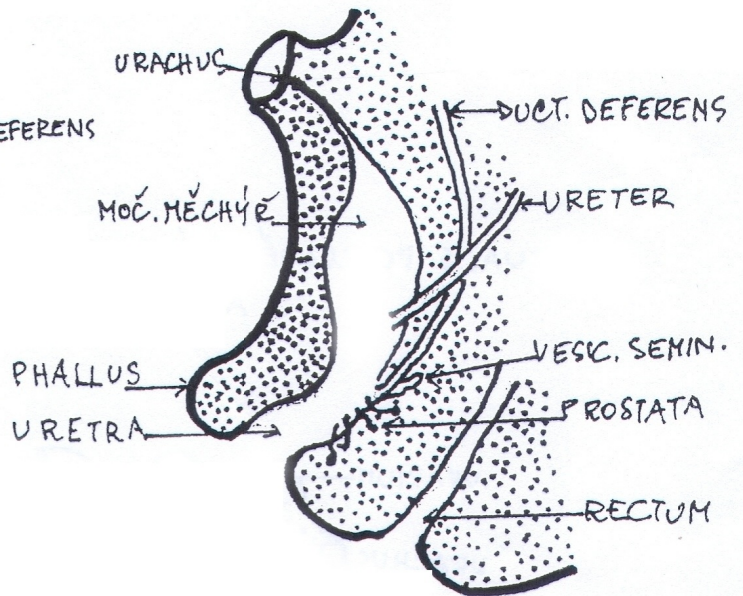
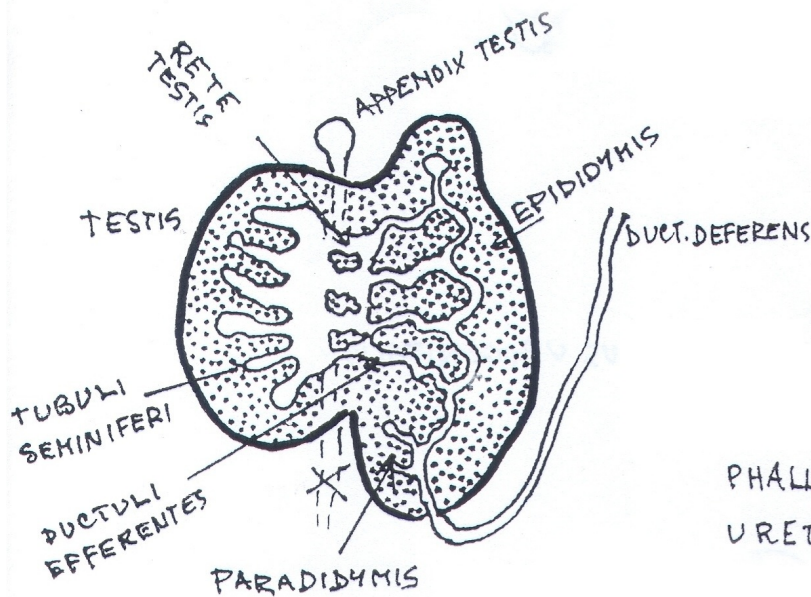
# Vývoj mužského genitálu



VZTAH GONADY a MESONEFROS

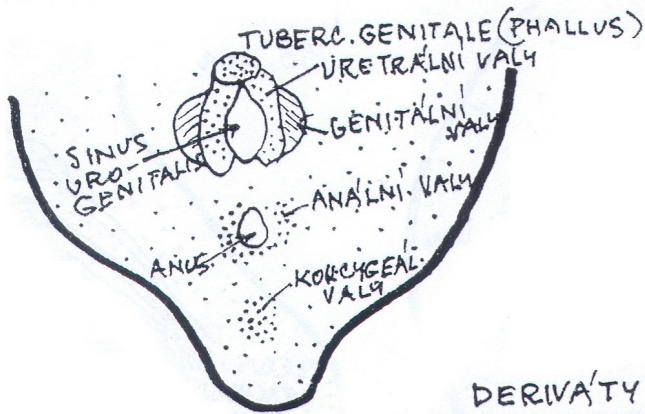
REGRESE DUCTUS MÜLLERI a VZNIK EPIDIDYMIS

VÝVODNÉ CESTY POHLAVNÍ a MOČOVÉ ♂





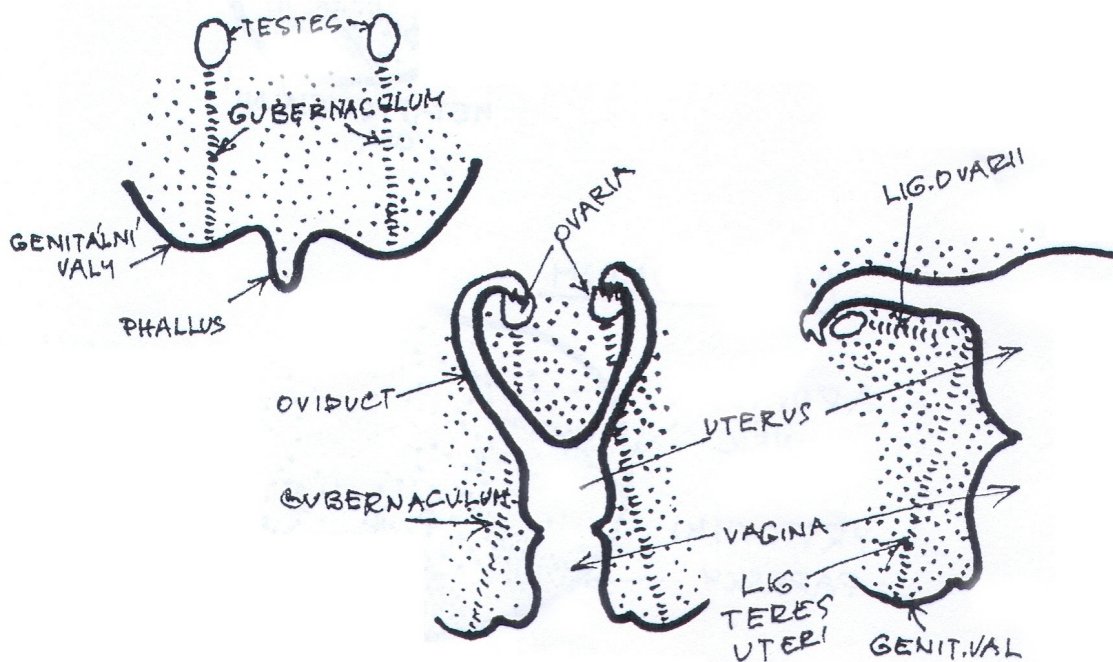
# Vývoj zevních pohlavních znaků



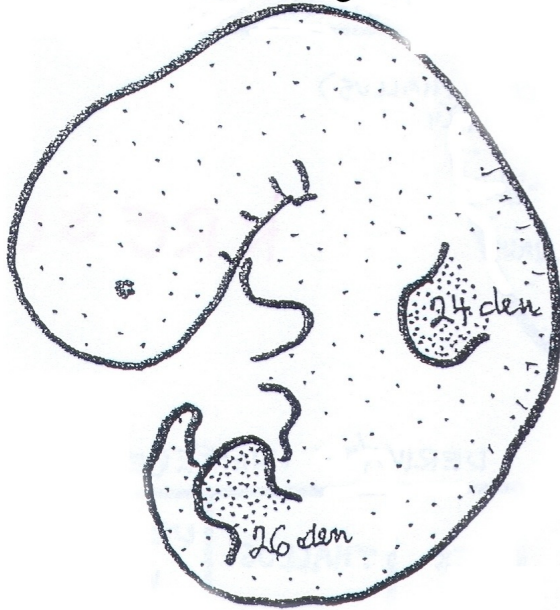
DERIVÁTY INDIFFERENTNÍCH STRUKTUR

SEX	PHALLUS	URETRÁLNÍ VALY	GENITÁLNÍ VALY
♀	CLITORIS	LABIA MINORA	LABIA MAJORA
♂	PENIS	URETRA CORP. CAVER. URETHRAE	SCROTUM

## Descensus testis a ovarii

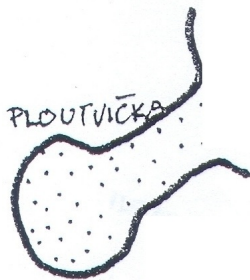
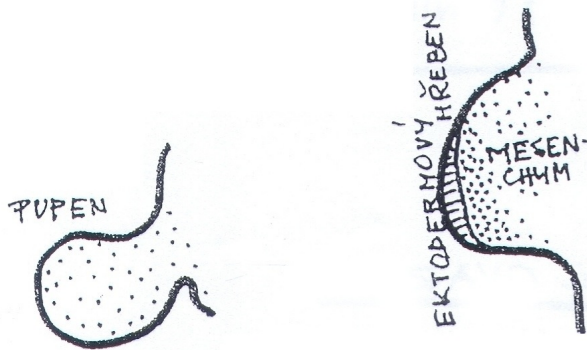
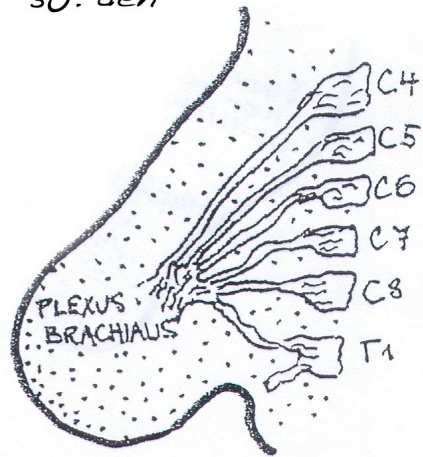


# Vývoj končetin

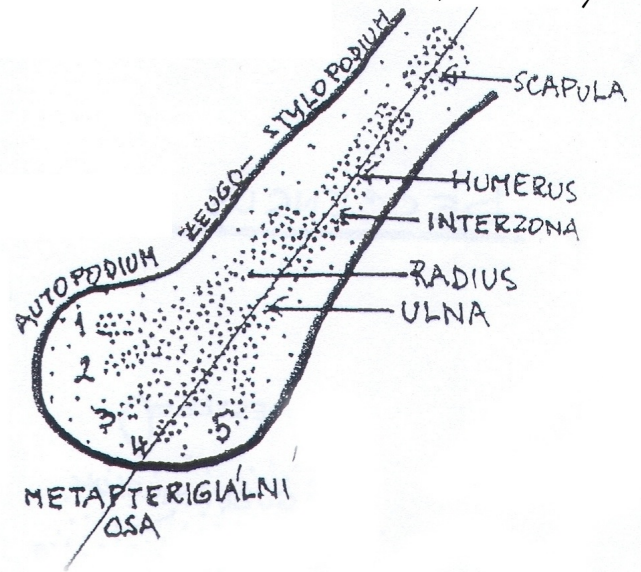


Končetinové pupeny

Inervace horní končetiny  
30. den

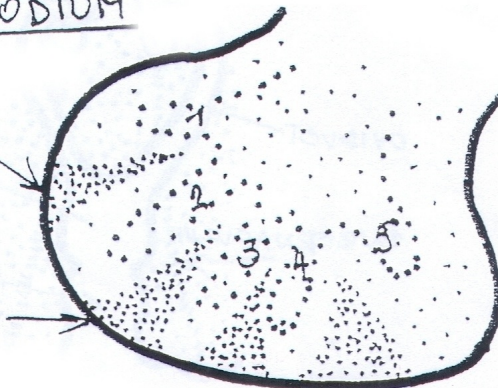


Chondroblastem horní končetiny



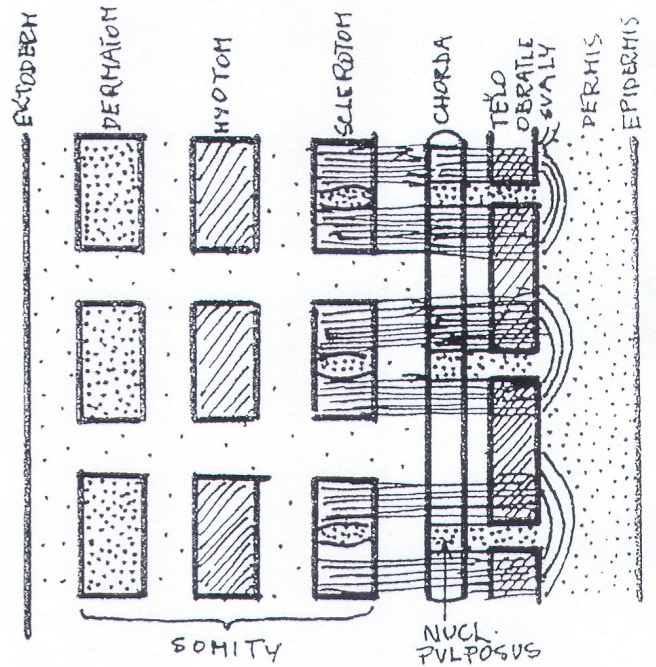
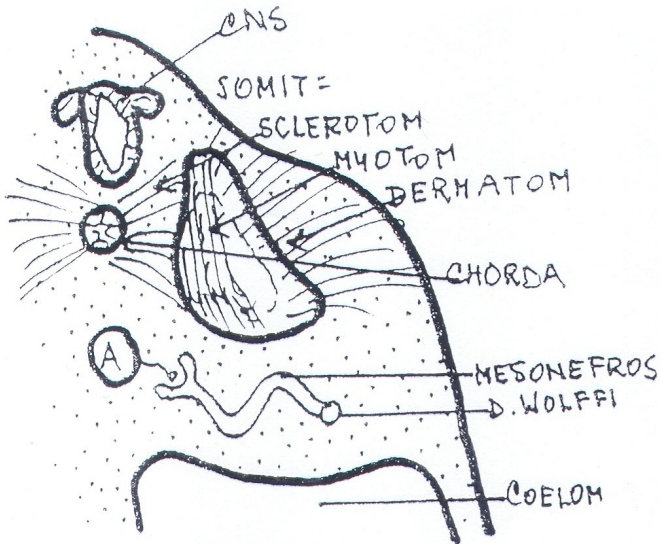
## AUTOPODIUM

APOPTÓZA  
BUNĚK  
MEZI  
PRSTOVÝMI  
PAPRSKY

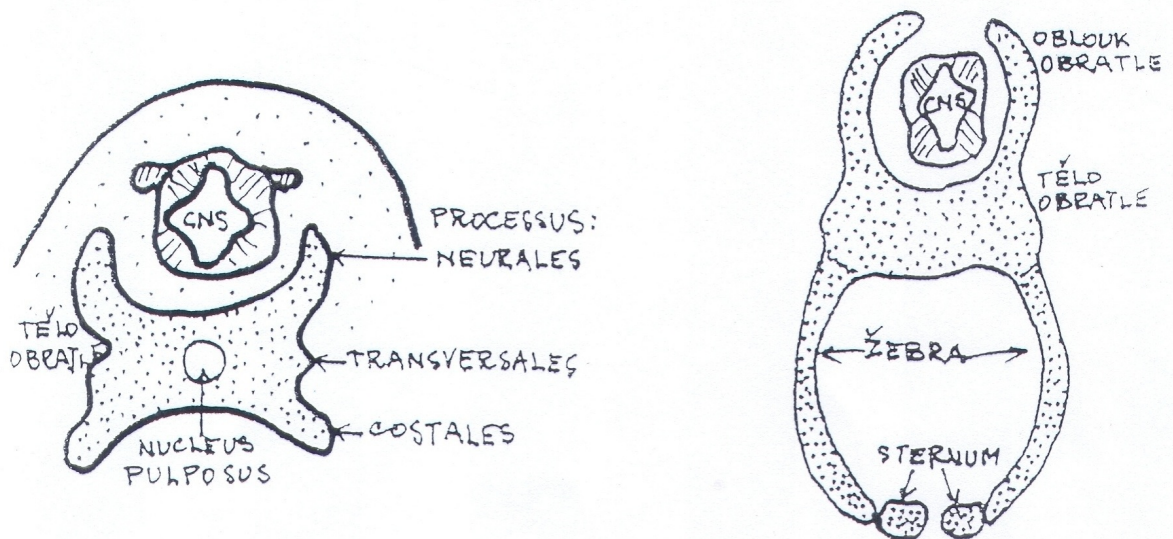


# Vývoj páteře

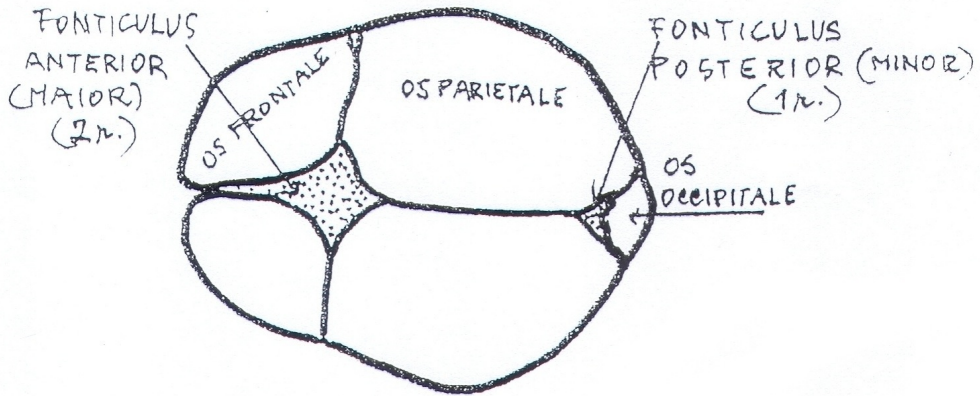
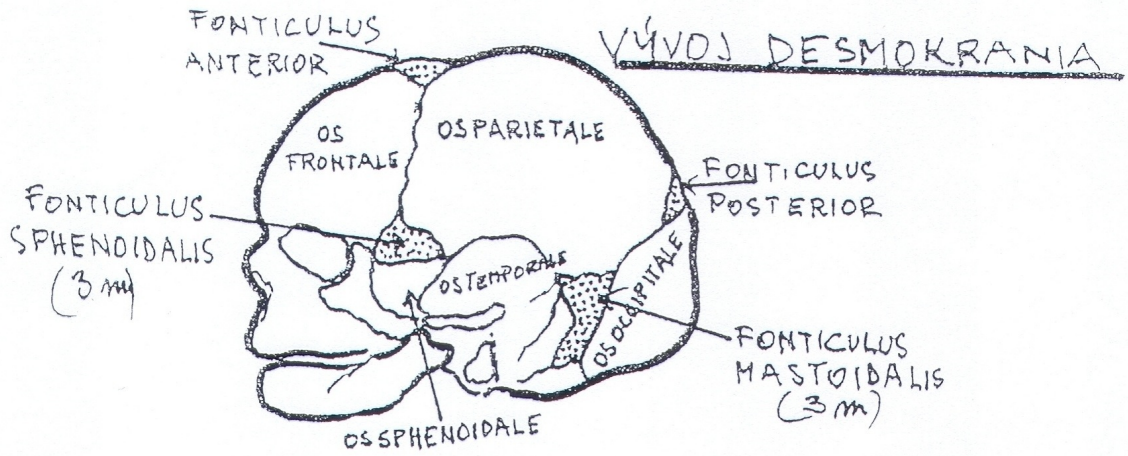
Rozpad somitů na 3 útvary



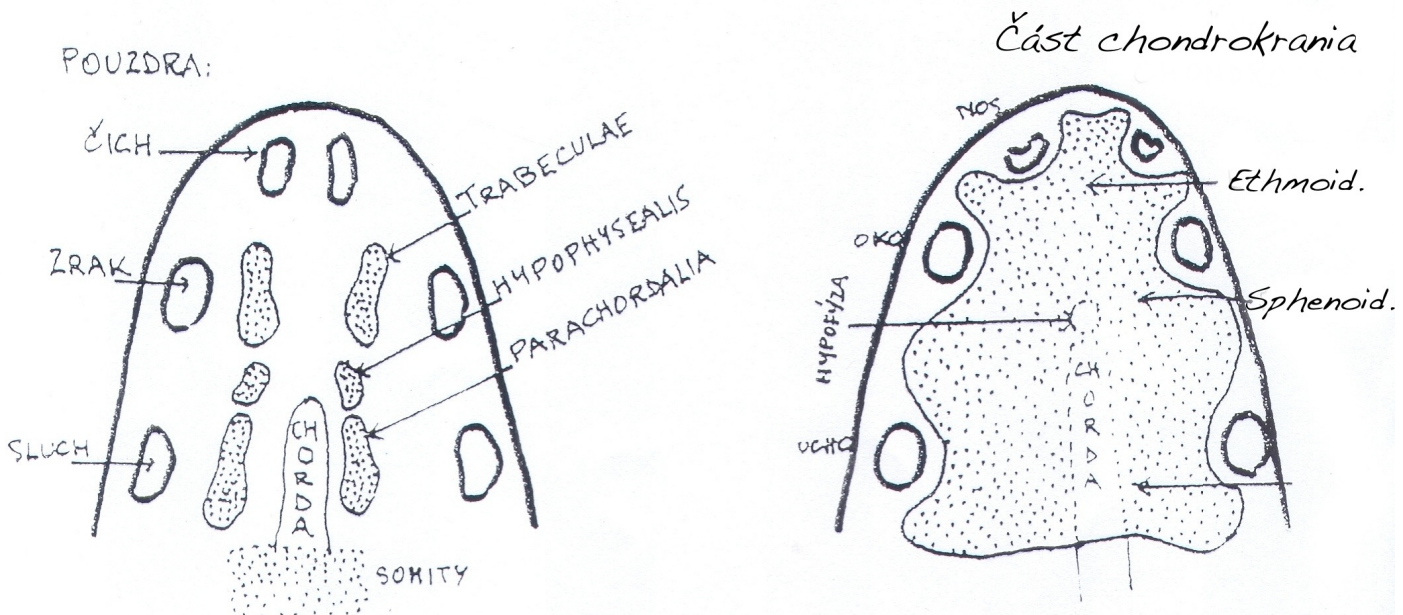
# Diferenciace obratlů



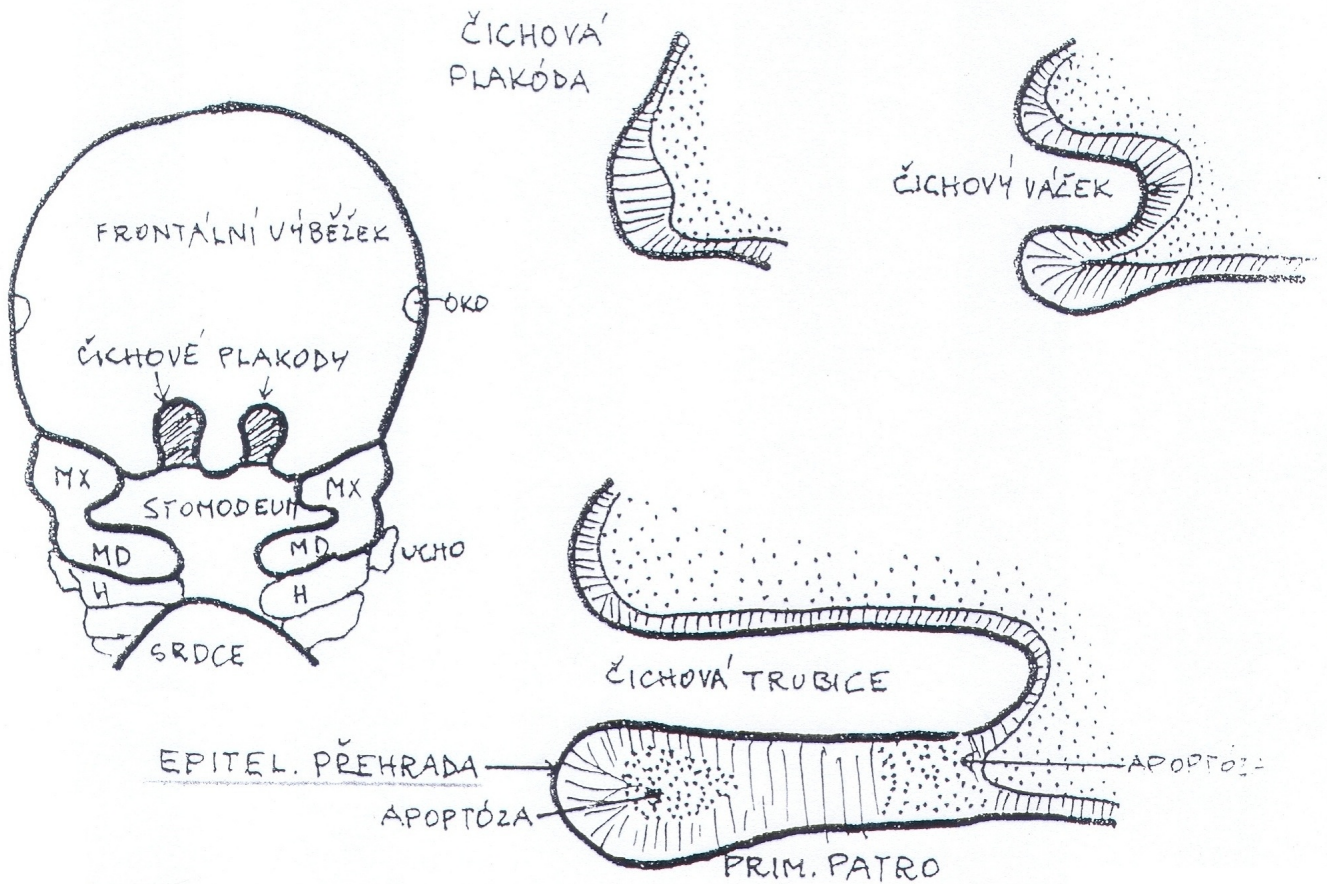
# Vývoj lebky



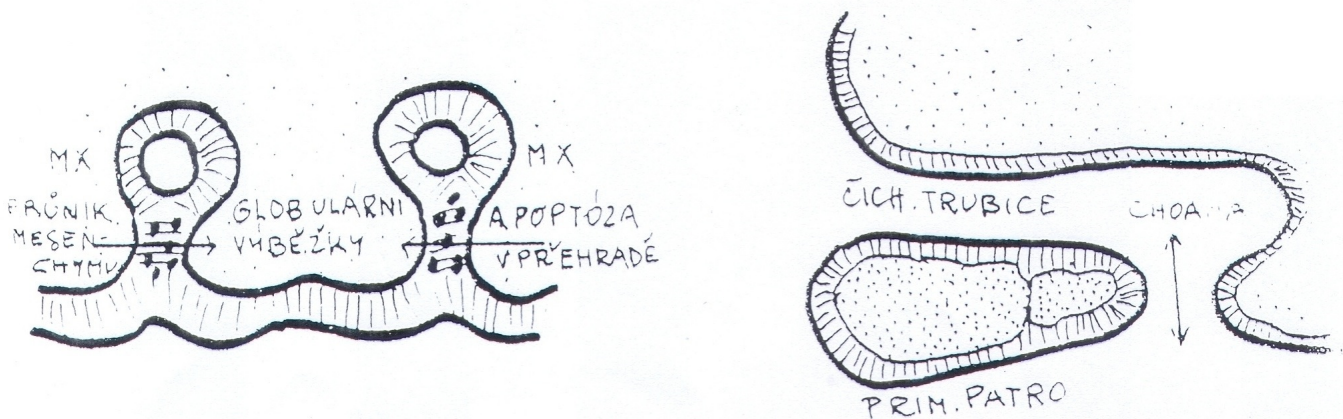
## VÝVOJ CHONDOKRANIA



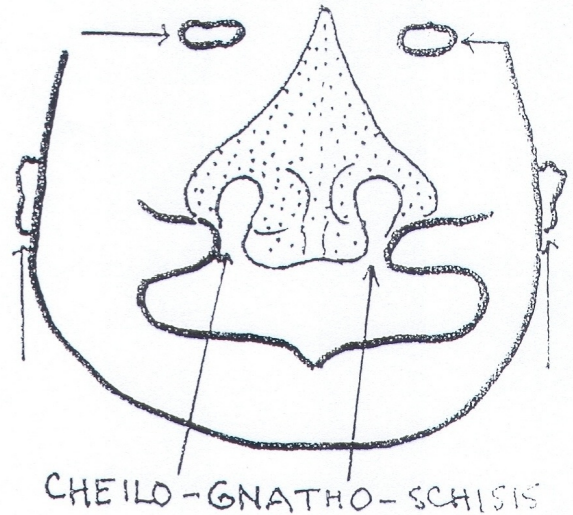
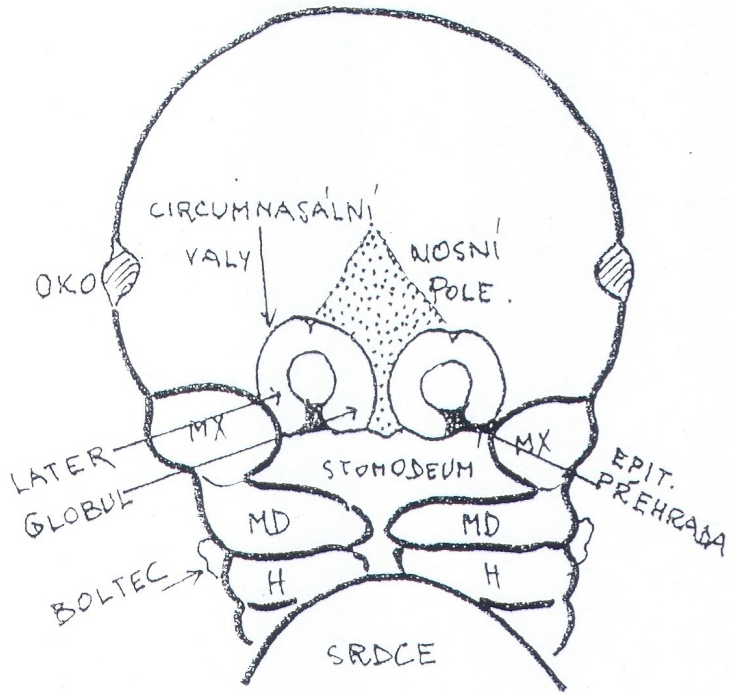
# Vývoj obličeje - nosu



# Vývoj primárního patra

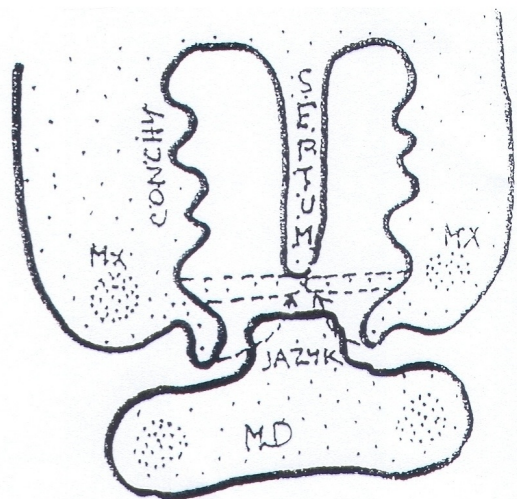
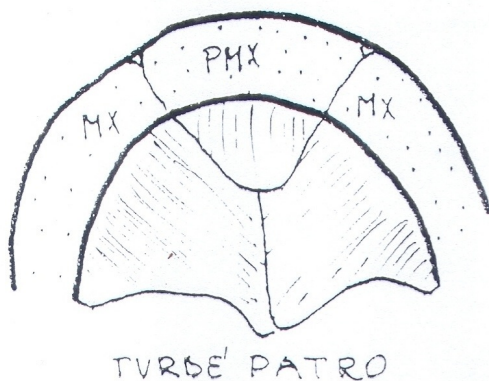
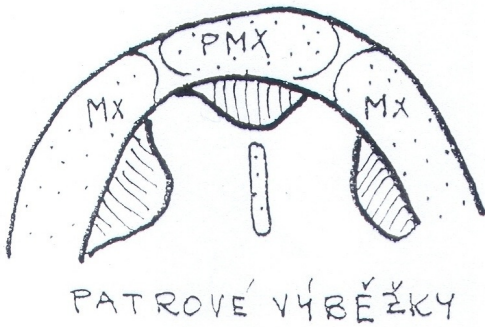


# Vývoj obličeje - rozštěpy



## VÝVOJ DEFINITIVNÍHO PATRA - PALATOSCHISIS

*Horizontalizace patrových výběžků*



Palatoschisis